

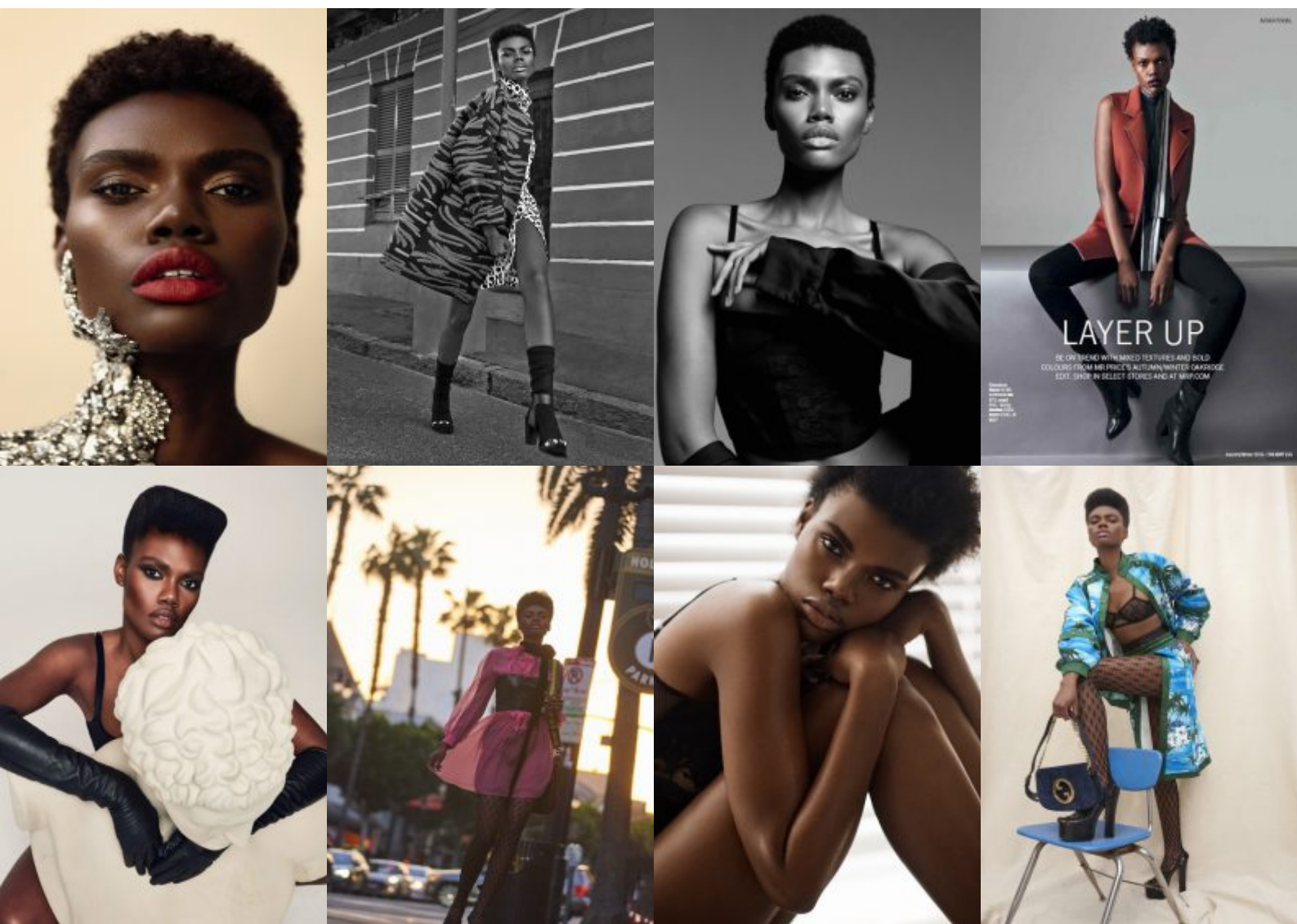
LONDON KNIGHT

London Knight is a half Nigerian half Jamaican born in San Diego who was diagnosed with Sickel cell Disease at 3 months old.but grew up in Missouri. Going to A Visual Performing Arts School was essentially what provided her with confidence of pursuing her dreams. As a young women she loved competing in Mathematical &Business Competitions as member of Future Business Leaders of America. During her time in school she learned the play the saxophone & flute. But although she was very studious everyone only recognized her height & striking features.

Height 6'0 | 183 cm Bust 31 | 79 cm Waist 25 | 64 cm Hip 37 | 93 cm Shoe Size 10 | 8 | 41.5

Dress 2-4 Hair Brown Eyes Brown

PORTFOLIO





Digital

