



GINTA LAPINA

HEIGHT 5'10 | 178 CM BUST 33 | 84 CM WAIST 25.5 | 65 CM HIP 35 | 89 CM SHOE SIZE 10.5 | 8.5 HAIR BLONDE EYES BLUE



GINTA LAPINA

HEIGHT 5'10 | 178 CM BUST 33 | 84 CM WAIST 25.5 | 65 CM HIP 35 | 89 CM SHOE SIZE 10.5 | 8.5 HAIR BLONDE EYES BLUE



Traje de chaqueta (c. p. v.) y pantalón (c. p. v.) en neopreno y salones con tacón descubierta en piel de becerro con bordados gráficos (c. p. v.), todo de Louis Vuitton.

En la página anterior, mono de Christian Dior (c. p. v.); collar de latón, jade amarillo y cristal de roca de Eddie Borgo (750 €).

GINTA LAPINA

HEIGHT 5'10 | 178 CM BUST 33 | 84 CM WAIST 25.5 | 65 CM HIP 35 | 89 CM SHOE SIZE 10.5 | 8.5 HAIR BLONDE EYES BLUE



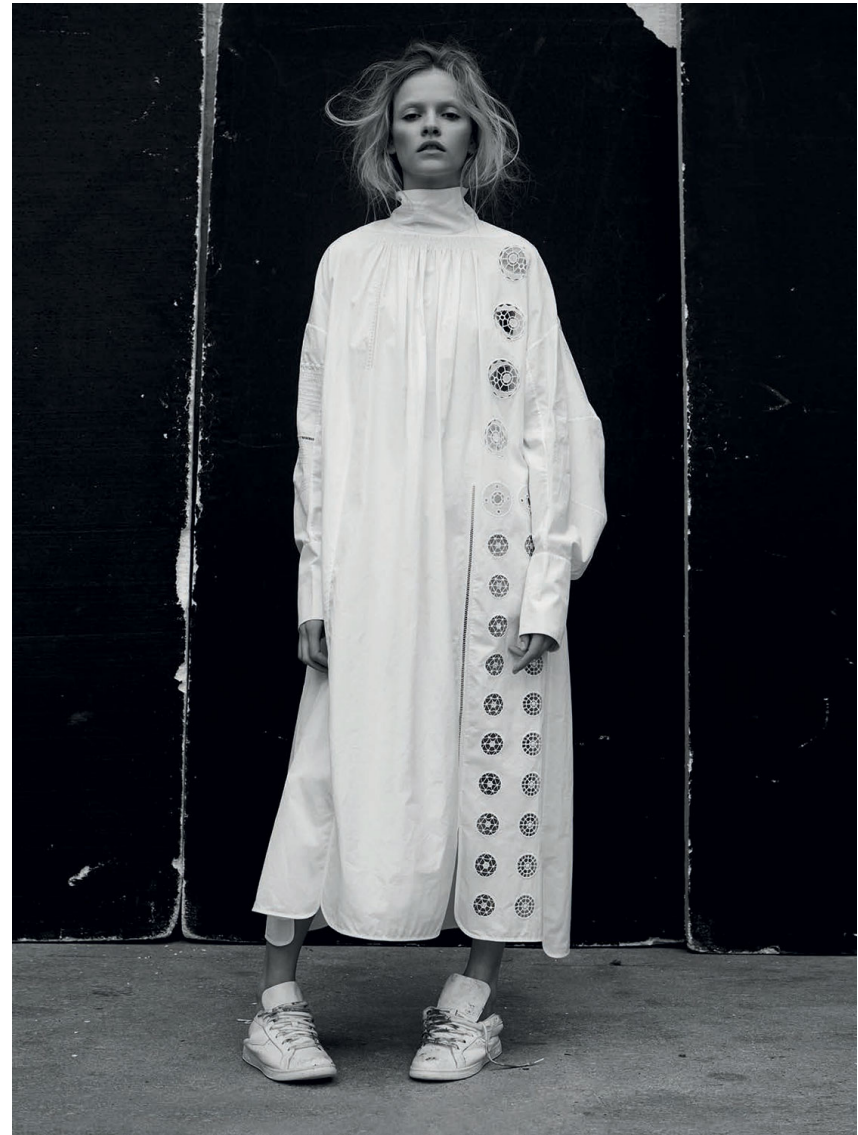
114



Saint Laurent

GINTA LAPINA

HEIGHT 5'10 | 178 CM BUST 33 | 84 CM WAIST 25.5 | 65 CM HIP 35 | 89 CM SHOE SIZE 10.5 | 8.5 HAIR BLONDE EYES BLUE



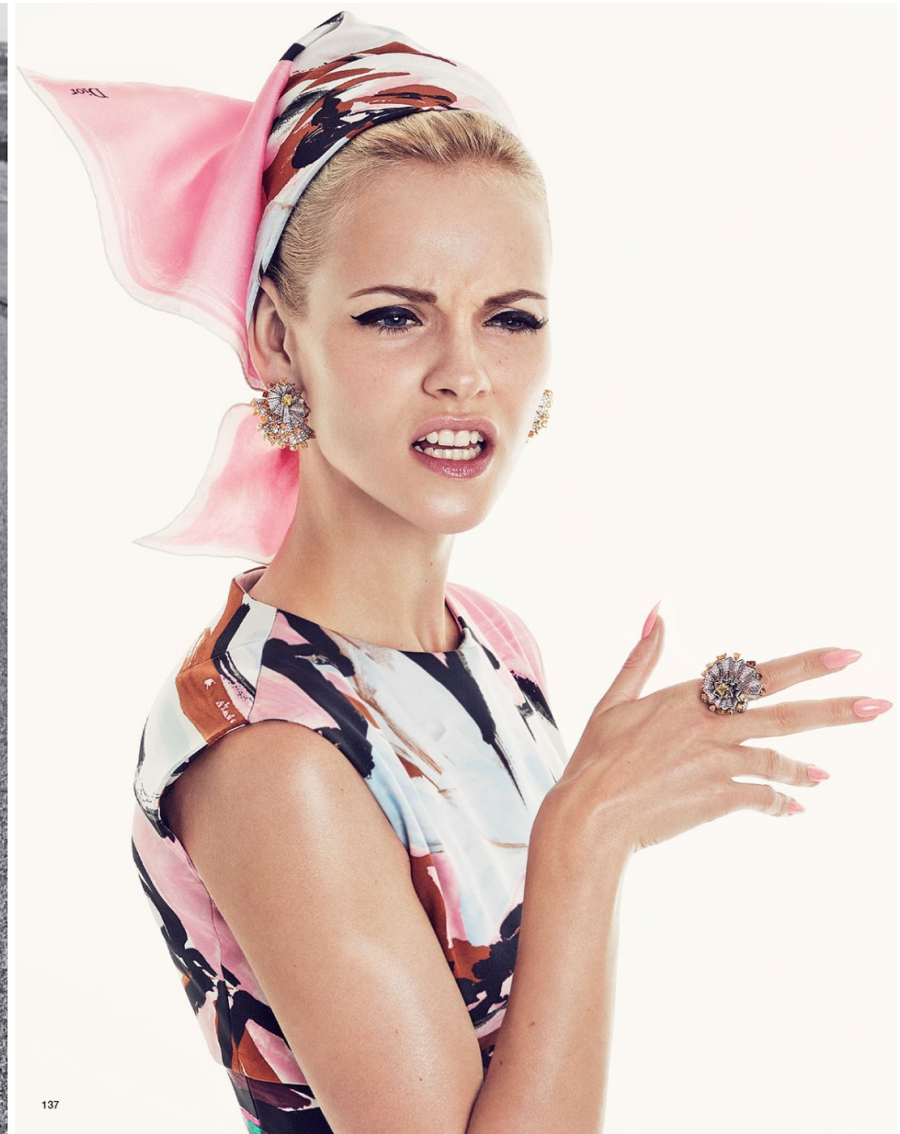
GINTA LAPINA

HEIGHT 5'10 | 178 CM BUST 33 | 84 CM WAIST 25.5 | 65 CM HIP 35 | 89 CM SHOE SIZE 10.5 | 8.5 HAIR BLONDE EYES BLUE



GINTA LAPINA

HEIGHT 5'10 | 178 CM BUST 33 | 84 CM WAIST 25.5 | 65 CM HIP 35 | 89 CM SHOE SIZE 10.5 | 8.5 HAIR BLONDE EYES BLUE



GINTA LAPINA

HEIGHT 5'10 | 178 CM BUST 33 | 84 CM WAIST 25.5 | 65 CM HIP 35 | 89 CM SHOE SIZE 10.5 | 8.5 HAIR BLONDE EYES BLUE



GINTA LAPINA

HEIGHT 5'10 | 178 CM BUST 33 | 84 CM WAIST 25.5 | 65 CM HIP 35 | 89 CM SHOE SIZE 10.5 | 8.5 HAIR BLONDE EYES BLUE